



GOLDEN  RING

Casting & Forging & Machining OEM & ODM Solutions

www.golden-ring.cn

GOLDEN  RING

青島钰鑫机械有限公司

Golden-Ring Industrial Co., Ltd.

Casting, Forging & Machining ODM&OEM Solution



GOLDEN  RING

QUALITY ASSURANCE MANAGEMENT

Innovative ideas make it much easier

Casting/Forging/Machining/Tooling/Rubber Specialist



Company brief

Brief

Profile (1994-2014)

The new foundry

Company structure

Company structure

Company employee

Production facility

Machining equipments

Test equipments

Typical products

Industries involved

Material involved

Products catalog

Contact us

Innovative ideas make it much easier

Casting/Forging/Machining/Tooling/Rubber Specialist



•Company Brief

Golden-Ring is a private company engaged in the supply of the casting, forging, and machining products.

QUALITY TECHNOLOGY EFFICIENCY are our targets continuously pursued.

The following will provide you with a general idea about our company.

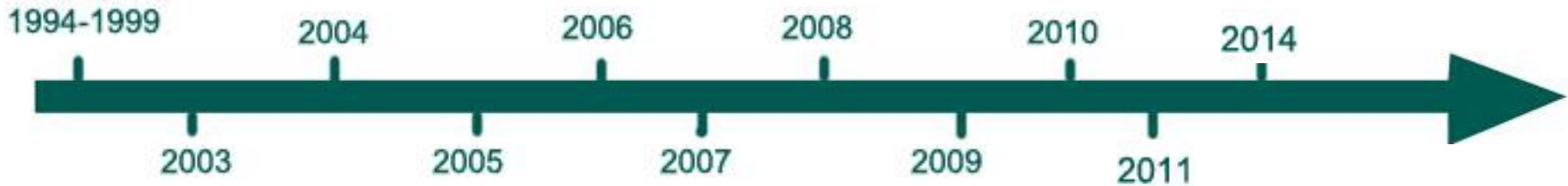


Innovative ideas make it much easier

Casting/Forging/Machining/Tooling/Rubber Specialist



•Company Brief



1994-1999

The founder of the company Mr. Shixin Ren, (engineer majored in tooling) started casting business with a state-owned company allowed for exporting in China. In 1999, He entered the automotive OEM industry in Germany market, which is the first milestone in the company's business development.



Innovative ideas make it much easier

Casting/Forging/Machining/Tooling/Rubber Specialist



The New Investment Casting Foundry

In 2011, we invest about 7 millions of dollar to rebuild a new precision casting foundry (33000m²) in our local area. The designed production capacity is 4000 tons per year and the equipment is automated line.

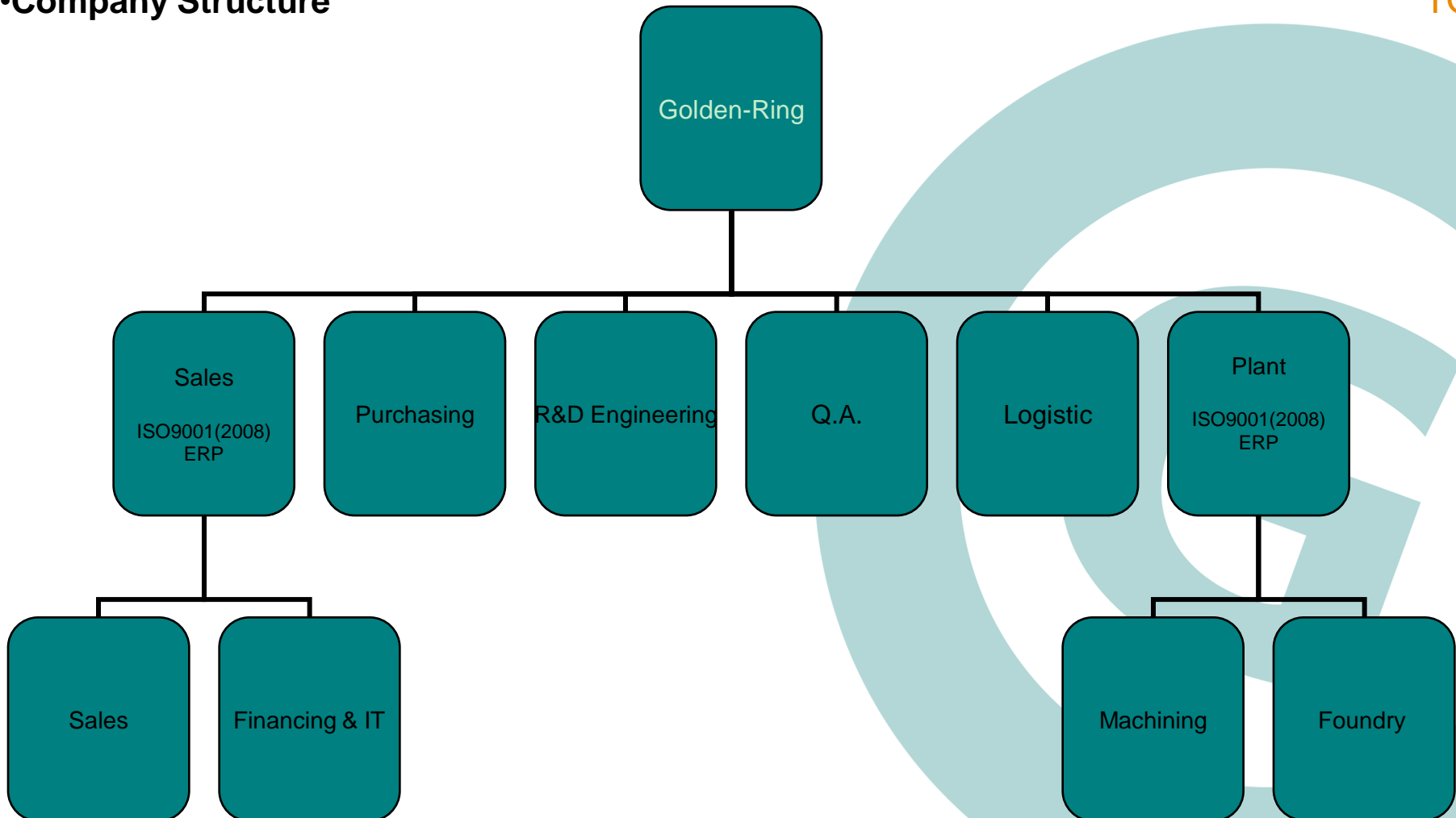
The material including carbon steel, alloy steel and stainless steel. Process on raw casting is mixed Japanese lost wax and Chinese lost wax, by which we can get good surface and economical cost. The general tolerance can meet is ISO8062 CT7-CT9 and suitable weight is per pc: 0.1kgs up to 50kgs.

This new equipped foundry will get into production in the end of 2012. Moreover, We aim to get certified on TS16949&ISO14001 in 2014.





•Company Structure





•Company structure

Dep.	Person	Function	Remark
Sales	4	Care customers	English fluent
Purchasing	2	Develop sub-contractor	
Financing & IT	2	Accounting ,ERP...	
R&D engineering	2+4	Engineering analyze (PPAP,FMEA,CP,CPK)	Mixed with machining shop and foundry
		3d (.stp,.step) ,2D	All more than 10 years in this area
		Working manual	
Q.A.	6	Q.C. + Q.A.	Work on AQL basis
Machining	11	Machining service	NC & CNC
Foundry	50	Investment casting service	Automated line
Logistic	2	Warehouse +delivery	
Total:	79		



•Production facility

TOP

Machining equipment

Main	Name	Model number	Accuracy	Quantity
Machining	Vertical milling machine	BYJCB1-400K	0.05, 780*290*410	1
	Vertical machining center	Mazak VCN410B (with 4 th axle)	0.015, 762*410*510	1
	Vertical machining center	Okuma MXR460V (with 4 th axle)	0.015, 762*460*510	1
	Horizontal NC	Mazak QTN200/500U-8	0.01, D=350,L=514	1
	Horizontal NC	Okuma L-390II-10	0.01, D=390,L=500	1
	Horizontal band saw machine	GB4240*60	0.5, 400*600	1
	Bench drilling machine	Z4120	0.1, D <20	2
	Bench tapping machine	SWJ-20	0.1, M <20	2

Equipment



•**Production facility**

TOP

Machining equipment



CNC from Mazak
With 4th axle



Turning lathe from Mazak



Machining equipment

TOP



CNC from Okuma
With 4th axle



Turning lathe from Okuma



Test equipment

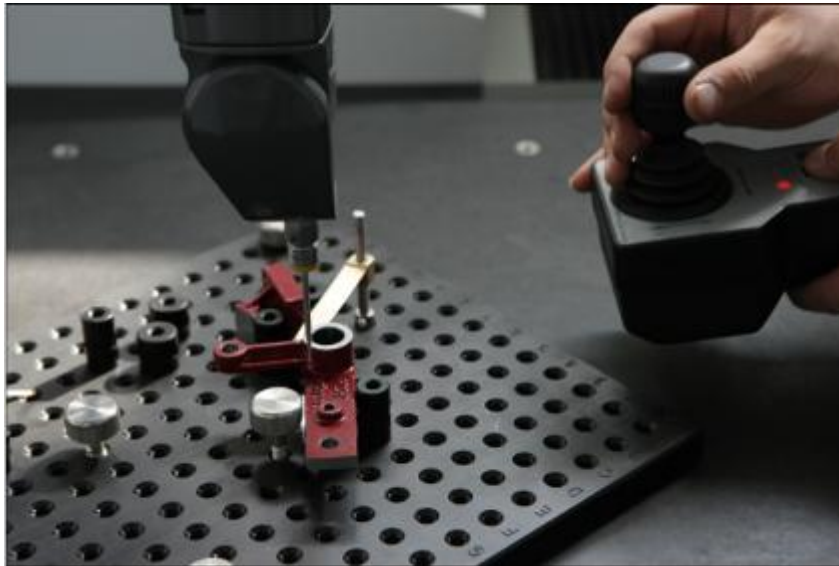
TOP

	Name	Model number	Quantity
Precision instrument	CMM	Hexagon global 7107	1
	Coating measuring instrument	German & UK Magnetic induction & eddy	2
	Spectrometer	German OBLF, AL+FE, 29channels	1
	Microstructure	China	1
	MT testing machine	German MR	1
	Brinell hardness tester	China HB3000L	1
General test tools	Dial indicator	0-5 ,0-10 ,35-50, 20-100	
	Depth indicator	0-150, 0-200, 0-300 (digital display)	
	Micrometer gauge	MITUTOYO 2mm (0.2mm)	
	Vernier caliper	0-150, 0-200; 0-300; 0-500 (digital display)	



Test equipment

TOP



Dimension

3D Measuring Machine Hexagon Global 7107



Microstructure

Microscope Metallographic Analysis



Test equipment

TOP



Coating thickness

German Thick meter



Chemical Composition

Spectrometer OBLF GS1000 (Fe + AL)



Magnetic particle testing machine

German MR



•Typical products

Industries involved

- **Municipal industry** (since 1999 for Spain, Germany, Malta market)
- **Mining machinery** (since 1999)
- ★ **Railroad trainline industry** (since 1999 for USA oem market)
- ★ **Automotive industry (Trailer,..)** (since 1999 for German oem market)
- ★ **Loader crane machinery** (since 2003 for USA & German oem market)
 - **Agriculture harvest machinery** (since 2003 for German both oem & after sales market)
 - **Construction industry** (since 2003 for German oem market)
- ★ **Forklift truck** (since 2010 for German oem market)
- ★ **Air tool** (since 2011 for Sweden, China oem market)

..the list is coming....



QUALITY ASSURANCE MANAGEMENT

Innovative ideas make it much easier
Casting/Forging/Machining/Tooling/Rubber Specialist



•Typical products

TOP

Raw parts Process&Material involved

Sand casting	Carbon steel (GS45, GS52, GS60)
Investment casting	Alloy steel (16Mn, 25Mn, 34CrMo, 42CrMo4)
Forgings	Stainless steel (CF8, CF8M,CF3, CF3M)

Our cooperative factories include forge plant (more than 10 years)

ductile iron plant and electrophoresis & plating processing plant (more than 15 years)

Machining involved

Carbon steel (GS45, GS52, GS60)
 Alloy steel (16Mn, 25Mn, 34CrMo, 42CrMo4)
 Stainless steel (CF8, CF8M,CF3, CF3M)



Facility	Material machined	Raw parts machined	Surface processing
CNC	Al	Block bar	Electrostatic coating
NC	Gray & ductile iron	forgings	Dacromet
Drill	Carbon & alloy steel	castings	
Tap	Stainless steel		



Forks Toe

EN10293 GE300+N

(investment casting +CNC machining)

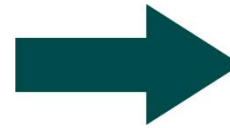


Cylinder Parts

EN10293 1.6220 G20Mn5

(investment casting +CNC machining)

Industry: Forklift TOP



Pallet stacking truck

End user: **JUNGHEINRICH**





TOP



Container twist lock

(casting, forgings, CNC machining, zinc plated, assembly)



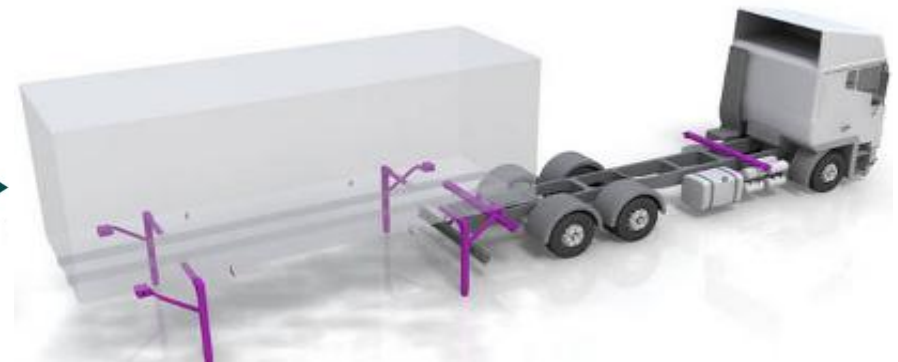
Foot retainer (investment casting,+ CNC machining)



Plate (investment casting)



Industry: Automotive (trailer)



End user:





TOP

Industry: German Agricultural machinery



Rubber wheel

(investment casting + CNC machining + rubber coated + painted)



shaft sleeve

(investment casting + machining + zinc plated)



Wheel (sand casting + CNC machining)



TOP

Industry: Loader Crane



End user:



Steel link

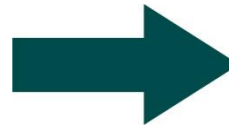
(investment casting+ MT+ CNC machining)



TOP



Industry: USA. Railroad train line



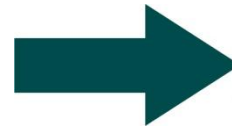
supporting castings/Pipe fittings

(investment casting + CNC machining)



TOP

Industry: Air tools



Air tool accessories

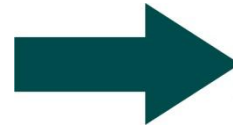
(AL die castings + CNC machining+ Polishing+ Powder coating)

End user:





TOP



Industry: Municipal



End user: ANRIN....



Municipal accessories

(Sand casting, investment castings)

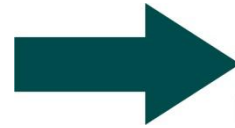


TOP



Windows accessories

(Investment casting + KTL)



Industry: Construction machinery



Construction accessories

(Investment casting + CNC machining)

Innovative ideas make it much easier

Casting/Forging/Machining/Tooling/Rubber Specialist



Office:

Rm1004 Fortune Plaza ,No.52 East Sea West Road ,266071 Qingdao , China

Tel: 0086-532-85763953

Fax: 0086-532-85763210

Machining shop:

No.69 Zhu Zhou Road, 266101 Qingdao , China

Tel: 0086-532-88702378

Fax: 0086-532-88702838



Casting foundry:

Jiangshan Town, Laixi county, 266603 Qingdao, China

E-Mail: info@golden-ring.cn

Web Site: www.golden-ring.cn



Thank you !

Innovative ideas make it much easier

Casting/Forging/Machining/Tooling/Rubber Specialist